

Helpman LEX-12-4RI-220/50-1

Specifications

Brand	Helpman
Type	LEX-12-4RI-220/50-1
kW	6,2
Refrigerant	Freon
Number of Fans	2
Fin Space in mm	4
Defrosting	None
m ³ /h	2.860
Sizes	1150x690x440 mm (LxWxH)
Remarks	Y.o.b. 1998
Volume	6,8 dm ³
Weight	42 kg
Stock	1



Description

Used Helpman LEX-12-4RI-220/50-1

Used Helpman LEX-12-4RI-220/50-1 evaporator on Freon type R22/R134a. Complete with 2 ATB SRBFT0,09/4-B31 fans - 50/60 Hz - 0,03 kW - 1255/1665 RPM - diameter 300 mm and a total airflow of 2.860 m³/h.

*All components of this used evaporator will be tested on good working, leak free condition (electro engines), coils, bearings) Choosing HOSBV means buying with warranty. We perform a industrial cleaning and rust spots will be covered. Also, we can arrange your shipment.

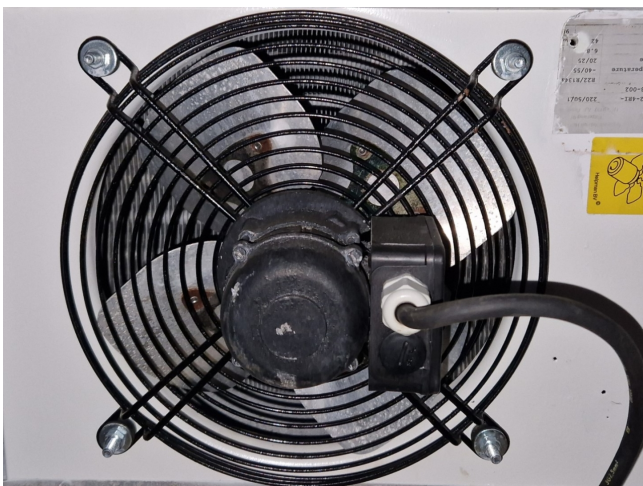


Apparatenfab. tek Hel...

Peizerweg 97

NL-9727 AJ Gron...

Type	LEX-12-4RI-	220/50/1
Serial nr.	806993-002	
Medium	R22/R134a	
Min/max workingtemperature	-40/55	
Designr./testpressure	20/25	
Volume	6.8	
Weight (empty)	42	



ATB	1~Mot 56
SRBFT0,09/4-B31	7849939
HELPMAN-NR: 300801	/S10 685915
Th.Cl.F IP 55 EN60034	CB3uF400VDB
⌊ 220-240 V 0,51A	WSK 130°C
cosφ 0,97 0,03kW 1255/min	50Hz
⌊ 220-254 V 0,50A	
cosφ 0,97 0,03kW 1665/min	60Hz

